



Ficha Individual
Base Genética: 4ª AG - OUT/2022
Data: 28/10/2022



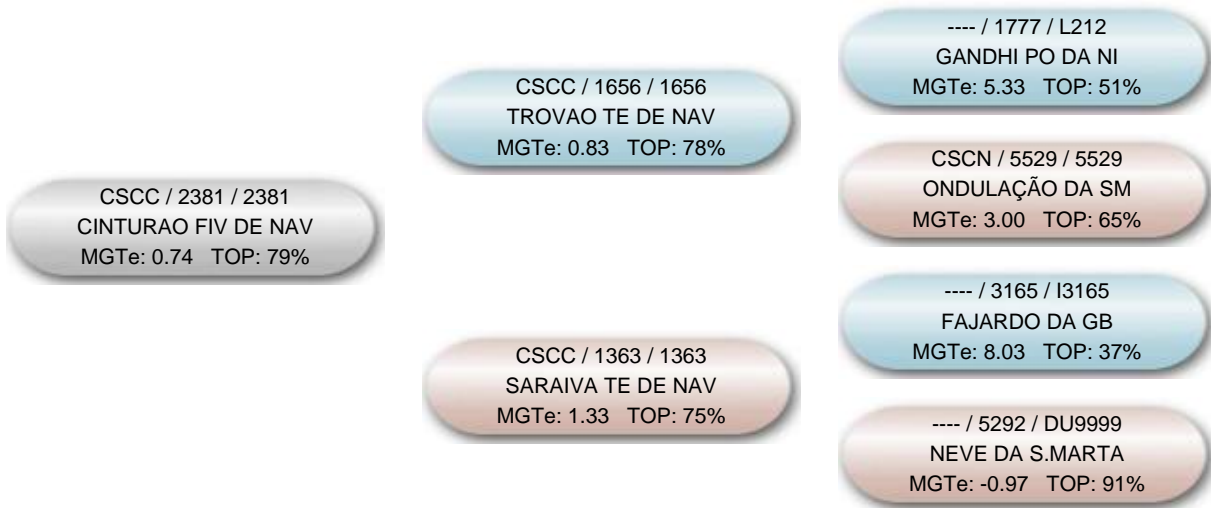
Nome do animal CINTURAO FIV DE NAV			Proprietário: 729 - Fazenda Castelo - Agro Maripá / Marcelo Baptista de Oliveira Criador: 2 - Chacara Navirai / Cláudio Sabino Carvalho		
Série CSCC	RGN 2381	RGD 2381	Raça Nelore	Categoria PO	Variedade Padrão
Central			Reprodução Programada		
Sexo Macho	Situação Inativo		Dt. Nasc. 15/05/2003	MGTe 0.74 @85	TOP @ 79%

DIPPG -0.34 @ 75 ® 56%	D3PG 60.27 @ 78 ® 71%	DIPMG -0.522 @ 74 ® 23%	MP120G -0.44 @ 79 ® 85%	MP210G -0.57 @ 78 ® 85%	MTP120G 0.01 @ 82 ® 78%	MTP210G 0.61 @ 82 ® 72%	DSTAYG 38.17 @ 83 ® 100%	DPACG -1.15 @ 72 ® 97%	DPGG 0.87 @ 92 ® 65%
DPNG 0.69 @ 91 ® 53%	DP120G 0.90 @ 89 ® 62%	DP210G 2.35 @ 89 ® 54%	DP365G 6.32 @ 91 ® 50%	DP450G 5.77 @ 92 ® 53%	DPAVG 41.51 @ 80 ® 97%	DCARG 0.126 @ 72 ® 97%	DIMSG 0.189 @ 77 ® 93%	DPE365G 0.14 @ 88 ® 46%	DPE450G 0.16 @ 90 ® 45%
DAOLG -1.63 @ 84 ® 88%	DACABG 0.30 @ 82 ® 19%	DMARG 0.15 @ 80 ® 8%	DMACG 0.091 @ 70 ® 100%	DPCQG -2.56 @ 86 ® 57%	DPPCG -1.73 @ 86 ® 67%	DEDG 50.24 @ 81 ® 50%	DPDG 30.42 @ 83 ® 92%	DMDG 29.21 @ 81 ® 97%	DESG 59.64 @ 86 ® 33%
DPSG 39.76 @ 86 ® 67%	DMSG 30.50 @ 86 ® 92%	DALTG 0.53 @ 81 ® 76%	DFRAMEG -0.037 @ 78 ® 21%	MGTe_CR 0.71 @ 83 ® 86%	MGTe_RE 1.52 @ 89 ® 57%	MGTe_CO -0.53 @ 83 ® 57%	MGTe_F1 0.56 @ 83 ® 32%		

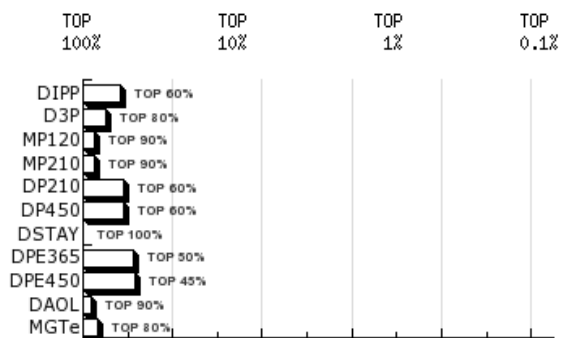
@: Acurácia ®: TOP DEP G: DEP Genômica *: DEP com fenótipo incorporado Em destaque DEPs que compõe o MGTe

NF3P 74	NN120 958	NRN120 82	NFSTAY 467	NF120 1311	NR120 89	NF210 1159	NR210 84	NF450 974	NR450 82	NFUS 126	NRUS 6	NFSAMS 66
------------	--------------	--------------	---------------	---------------	-------------	---------------	-------------	--------------	-------------	-------------	-----------	--------------

Genealogia



DEPs Gráficas



- Diamante - TOP 1%
- Esmeralda - TOP 5%
- Rubi - TOP 10%
- Safira - TOP 20%
- Topázio Imperial - TOP 30%
- TOP maiores 30%