

Nome do animal ILUSTRE DA ROSALITO			Proprietário: 216 - Fazenda Perfeita União / Tarcisus Galvão Tonetto Criador: 247 - Estância Rosalito / Rosario Pegorer		
Série RPOG	RGN 171	RGD	Raça Guzerá	Categoria PO	Variedade Padrão
Central			Reprodução Programada		
Sexo Macho	Situação Inativo	Dt. Nasc. 10/02/2011	MGTe 19.01 @41	TOP @ 4%	

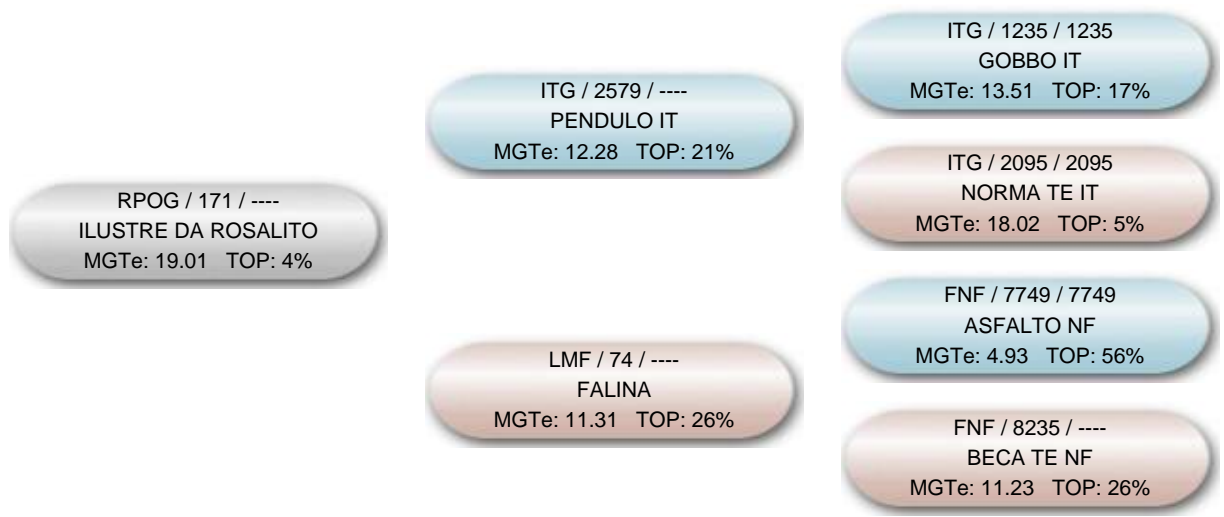
DIPP -0.94 @ 16 @ 4%	D3P	DIPM	MP120 0.80 @ 16 @ 39%	MP210 1.07 @ 15 @ 39%	MTP120 4.49 @ 27 @ 7%	MTP210 6.81 @ 27 @ 7%	DSTAY 61.13 @ 15 @ 21%	DPAC 1.05 @ 9 @ 41%
DPG 1.05 @ 10 @ 91%	DPN 1.42 @ 65 @ 90%	DP120 7.38 @ 50 @ 1%	DP210 11.47 @ 52 @ 1%	DP365 16.00 @ 55 @ 7%	DP450 21.68 @ 57 @ 3%	DPAV 12.34 @ 4 @ 61%	DCAR 0.004 @ 30 @ 61%	DIMS 0.200 @ 35 @ 86%
DPE365 0.60 @ 50 @ 7%	DPE450 1.24 @ 53 @ 2%	DAOL 2.03 @ 50 @ 8%	DACAB -0.10 @ 46 @ 98%	DMAR -0.29 @ 38 @ 100%	DMAC	DPCQ	DPPC	DED
DPD	DMD	DES	DPS	DMS	DALT	DFRAME		

@: Acurácia @: TOP DEP G: DEP Genômica

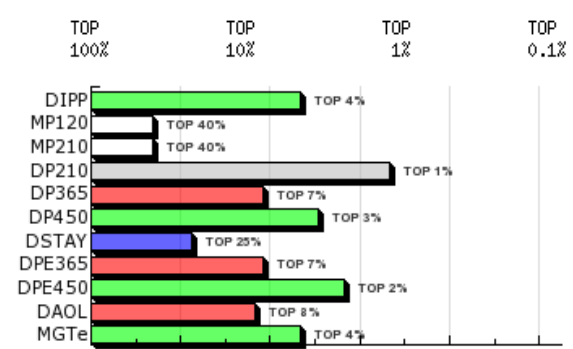
Em destaque DEPs que compõe o MGTe

NF3P	NN120	NRN120	NFSTAY	NF120	NR120	NF210	NR210	NF450	NR450	NFUS	NRUS	NFSAMS
0	7	1	0	58	2	56	2	35	1	25	1	0

Genealogia



DEPs Gráficas



- Diamante - TOP 1%
- Esmeralda - TOP 5%
- Rubi - TOP 10%
- Safira - TOP 20%
- Topázio Imperial - TOP 30%
- TOP maiores 30%